



BERRIEN COUNTY SPOTLIGHT

**4-H Family News**

VOLUME 25 ISSUE 2 — November

**Berrien County MSU Extension Office  
Upcoming Holiday Closures**

**Thursday, Nov. 11, 2021**

**Thursday, Nov. 25, 2021**

**Friday, Nov. 26, 2021**

**Thursday, Dec. 23, 2021**

**Friday, Dec. 24, 2021**

**Monday, Dec. 27, 2021**

**Tuesday, Dec. 28, 2021**

**Wednesday, Dec. 29, 2021**

**Thursday, Dec. 30, 2021**

**Friday, Dec. 31, 2021**

**Monday, Jan. 17, 2022**

The Berrien County MSU Extension Office is currently open for walk-ins. If you have a pick up, we ask you please call ahead so the item is ready for you when you arrive.

**Contact Us**

Berrien County  
MSU Extension Office  
1737 Hillandale Road  
Benton Harbor, MI  
49022

**Office Hours:**

Monday thru Friday  
8:30 a.m.—Noon  
&  
1:00—5:00 p.m.

**Phone**

269-927-5674

**Fax**

269-944-4128

**Web Site**

[http://msue.anr.msu.edu/county/berrien/berrien\\_county\\_4\\_h](http://msue.anr.msu.edu/county/berrien/berrien_county_4_h)

**Facebook**

Berrien County 4-H  
Youth Development

**Your 4-H Youth  
Development Staff**

Kelly Stelter  
4-H Program  
Coordinator  
[grandtke@msu.edu](mailto:grandtke@msu.edu)  
269-927-5674 ext. 4015

Clara Jungermann  
4-H Urban Program  
Coordinator  
[jungerma@msu.edu](mailto:jungerma@msu.edu)  
269-927-5674 ext. 4012

**INSIDE THIS ISSUE:**

Participation Fee and Candy Bar Fundraiser	2
Display Contest Winners and Citizen Washington Focus	3
2021 Berrien County Member & Leader Recognition	4-5
Thanks 4 Giving	6
Volunteer and Club Coordinator Information	7
Countywide Projects	8
Tips for 4-H Meetings	9
Statewide News and Calendrer	10-11

Michigan State University is an affirmative action/equal opportunity employer. Michigan State University Extension programs and materials are open to all without regard to race, color, national origin, gender, gender identity, religion, age, height, weight, disability, political beliefs, sexual orientation, marital status, family status or veteran status. Issued in furtherance of MSU Extension work, acts of May 8 and June 30, 1914, in cooperation with the U.S. Department of Agriculture. Quentin Tyler, Director, MSU Extension, East Lansing, MI 48824. This information is for educational purposes only. Reference to commercial products or trade names does not imply endorsement by MSU Extension or bias against those not mentioned. The 4-H Name and Emblem have special protections from Congress, protected by code 18 USC 707.

## Enrollment Reminders!

**Enrollment is open  
for the 2021 –2022  
4-H Year!**



### **Deadlines:**

**June 1 New  
Member**

**January 1  
Returning  
Member**

[https://  
v2.4honline.com/  
#/user/sign-in](https://v2.4honline.com/#/user/sign-in)

## **Michigan 4-H eliminates 4-H participation fee**

It is with great enthusiasm that MSU Extension has eliminated the 4-H participation fee beyond the current program year. The fee was not collected in 2020-2021 in consideration of the financial strain put on some families due to the COVID-19 pandemic. This pause gave the organization an opportunity to reflect on how it can best reach all audiences. Despite best efforts, this fee has been a barrier for some. By removing the fee indefinitely, MSU Extension feels it can best bring the power of 4-H to all young people in Michigan.

MSU Extension 4-H program coordinators played a large role in leading MSU Extension through this decision. These professionals serve alongside youth across the state and have been champions for removing the participation fee in an effort to better reach under-served audiences in rural, urban and suburban communities.

It is important to note that enhancements previously supported by 4-H participation fee funds, including 4-H grants, awards and scholarships, and supplemental accidental insurance for 4-H youth and volunteers, will continue. Michigan 4-H has identified alternative funding sources that can support these and other local and state programming initiatives previously enhanced by participation fee dollars. This includes endowments, grants, reallocating funds formerly used for 4-H participation fee scholarships and other methods. The quality and quantity of programming offered by Michigan 4-H will not be diminished as a result of the participation fee dissolution.

The last 18 months have been difficult. MSU Extension is excited to once again offer face-to-face programs in local communities and hopes this new policy will provide the current and future 4-H community with new and improved opportunities to grow with 4-H.

## **4-H Candy Bar Fundraiser Money Due**

The Annual Fall Fundraiser is in full swing. Thank you to all the clubs that have participated in selling Gertrude Hawk Candy Bars. Reminder to clubs that sold Gertrude Hawk Candy Bars, that the deadline for ALL money to be turned in by December 6, 2021. Checks can be either mailed to 1737 Hillandale Road, Benton Harbor, MI 49022; dropped off during office hours or through the after hours mailbox. A Club's portion of the candy bars profits cannot be distributed until all money owed by the club is submitted. Checks should be made payable to Berrien County 4-H Leaders Association, Inc.

## **Monday, December 6, 2021: ALL MONEY DUE**

For questions, issues or concerns related to the candy bar sale, please contact Fundraising Chair, Chelsey Sobraliski at sobraliski.c@gmail.com or via phone at 269-487-8279.

# National 4-H Week Display Contest Winners!!

Club Division: [River Valley Wranglers 4-H Club](#)

Cloverbud: [Michael Schneider](#)

Senior Division: [Ross Clare](#)

Overall Club Participation: [Galien Chanters 4-H Club](#)

Congratulations to all our winners and thank you to all those who participated in National 4-H Week Activities! Those who won a Social Media Trivia prize should have received it in the mail. If you have not, please contact Clara Jungermann at the Berrien County Extension Office at [jungerma@msu.edu](mailto:jungerma@msu.edu) or 269-927-5647 ext. 4012.

3

## Save the date!

The World Food  
Prize Michigan  
Youth Institute is  
scheduled for  
May 12, 2022

with options for in  
person and virtual  
participation!

Details of the event and  
the 2022 Michigan  
Youth Institute Global  
Challenge  
guidebook can be  
accessed now from  
the World Food Prize  
Michigan Youth  
Institute webpage.

<https://>

[www.canr.msu.edu/](https://www.canr.msu.edu/)

[wfpmiyi/](https://www.canr.msu.edu/wfpmiyi/)



CITIZENSHIP  
WASHINGTON  
FOCUS



**Who?** Michigan 4-H Youth ages 15-19

**When?** June 25-July 1. The Michigan 4-H Delegation leaves by bus on Saturday, June 25 with the first stop at the 911 Memorial in PA and then stays Saturday night in Gettysburg. On Sunday the group will tour the battlegrounds and then travel on to D.C.

**Where?** The group will stay at the Hyatt Regency in Bethesda, MD

**Cost?** The total cost is \$2,000.00 (includes transportation, all lodging, conference costs and most meals) plus 7 meals and spending money.

**How do I sign up?** Contact Clara Jungermann 4-H Program Coordinator at [jungerma@msu.edu](mailto:jungerma@msu.edu) or 269-927-5647 ext. 4012.

**Scholarship?** Berrien County 4-H is offering one scholarship in the amount of \$1,000.00 to a member to attend the 2022 CWF trip. Applications for the scholarship can be requested by contacting the Berrien County MSU Extension Office at 269-927-5674. Applications are due by January 4, 2022 no later than 5:00 p.m. If youth are chosen for the scholarship a deposit of \$250.00 must be made no later than January 6, 2022 to the Berrien County MSU Extension office at 1737 Hillandale Road, Benton Harbor, MI 49022.

# Berrien County Fall Into 4-H Recognition

## Clover Years of Service Awards Volunteer Years of Service

5 Years—Silver  
*Nancy Carpenter*  
*Karey Sebasty*

10 Years—Gold  
*Michelle Crean*  
*Pat Crean*  
*Marci Purucker*  
*Tim Baker*

20 Years—Diamond  
*Gail Freehling*  
*Lisa Rossman*  
*Shelley Zeiger*  
*Julie Holtsclaw*  
*Heidi Kruger*

25 Years—Emerald  
*Vicki Williams*  
*Janice Gruss*

35 Years—Sapphire  
*Barbra Schoene*

40 Years—Diamond  
*Pam McCaleb*



## 2021 Berrien County Member & Leader Recognition

The Berrien County 4-H Youth Program proudly presented the 2021 Berrien County 4-H Member & Leader Recognition on Saturday, October 30, 2021 at Jollay Orchards in Coloma. This year, the program provided award recipients and their families with family activities at Jollay Orchards following the awards presentation. We would like to make everyone aware of the top awards given out. The program and awards were sponsored by both the Berrien County 4-H Leaders Association, Inc. and the Berrien County 4-H Foundation, Inc.

## Berrien County 4-H Alumni Scholarship Award

The Berrien County 4-H Alumni Scholarship is awarded annually to a Berrien County 4-H alumni who has completed 5 years of membership including their senior year of high school, maintained a GPA of at least a 2.8 or higher, interviewed with the selection committee and submitted 3 letters of recommendation. Recipient received a \$1,000.00 scholarship towards their continuing education.

*Jacklyn Alsbro*

*Alumni of the Double Bridle 4-H Club and Great Expectations 4-H Club*

## Joseph Cerny & Evelyn Cerny Memorial Scholarship Award

The Berrien County 4-H Alumni Scholarship is awarded annually to a Berrien County 4-H alumni who has completed 5 years of membership including their senior year of high school, maintained a GPA of at least a 2.8 or higher, interviewed with the selection committee and submitted 3 letters of recommendation. Recipient received a \$1,000.00 scholarship towards their continuing education. Scholarship is sponsored by the Cerny Family.

*Karen Smith*

*Alumni of the Galien Chanters 4-H Club and Fuzzy Friends 4-H Club*

## All-Achievement Award

The All-Achievement Award recognizes member's leadership and experience within a project area that they have completed for at least four years. Youth are only able to receive one All-Achievement in a project in their 4-H career.

*Lillian Moore – Beef*

*Evie Clare – Horse and Pony*



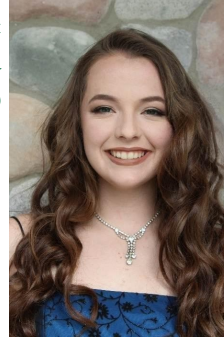
## Leo Stanley Outstanding 4-H'ers Award

The Leo Stanley Outstanding 4-H'er Award is the highest honor a 4-H'er can receive and is sponsored by the Southwest Exchange Club of Michigan. Selection is made encompassing a member's whole 4-H career. A maximum of two youth can receive this honor in a given year.



Ben Mckee  
Redbud Country Goat 4-H Club

Evie Clare  
Baroda Bunnies 4-H Club and  
Great Expectations 4-H Club



## County Project Medals

The County Project Medals recognizes members within a project area that they have completed for at least three years. Youth are only able to receive one project medal in a project area in their 4-H career.

Madeline Stockman - Citizenship

Sean Walker - Community Service

Keziah Metz - Dog Science

Noah Metz - Dog Science

Aiden Conley - Goat Science

Madeline Stockman - Horse and Pony

Makayla Aalfs - Horse and Pony

Jae Walker - Leadership

Lillian Moore - Swine Science

Matthew Moore - Swine Science

Madeline Janke - Rabbits & Cavy Science

## 4-H Senior Award

4-H Senior Awards were presented to Berrien County 4-H members who have been a member for five or more years and have plans to graduate from high school this current 4-H year during the 2021 Berrien County 4-H Member and Leader Recognition Celebration on Saturday, October 30, 2021. Please note, cords will not be replaced if lost. 4-H Families are asked to request permission from their designated school in advance if there are any restrictions when it comes to wearing cords during graduation. If school restrictions do apply, we ask that all families respect school policy accordingly. 2021 4-H Senior Award Recipients are as follows:

Emma Fanslau - River Valley Wranglers

Lillian Moore - River Valley Wranglers

Matthew Oliver - Town and Country Paws and Pals

Alyssa Garrison - Town and Country Paws and Pals

5

## Outstanding 4-H Leader Award

The Outstanding 4-H Leader Award recognizes 4-H leaders for their volunteer service and leadership within their 4-H clubs as well as their leadership on county programs, committees, and activities that benefit the more than 500 youth and their families enrolled in Berrien County 4-H.

Margie Hojara-  
Hadsell

We Can Ride 4-H  
Club

Julie Holtsclaw  
Straight Shooters 4-H  
Club





# THANKS



## GIVING DINNER

### *Berrien County Farmers!*

Provided by Berrien County Farm Bureau, Berrien County 4-H Clubs, Niles FFA Chapter, and Southwestern Michigan Collegiate Farm Bureau.

**WHAT:** The partnering organizations will provide Thanksgiving Dinner ingredients in a basket for needy families. Each basket will be packed with the following ingredients:

- 1 Turkey
- 1 Package of dinner rolls
- 1 Pumpkin Pie
- locally grown apples
- 1- lb of REAL butter
- 1- gallon of milk

We ask each participating 4-H Club to supply the following for each box:

- 1- 3 lb bag of potatoes
- 1- 15 oz. can of sweet potatoes
- 1- 14 oz. can of cranberries sauce
- 1- 6 oz. box of stuffing
- 1- .87 oz. packet of dried gravy mix or a Jar of gravy
- 1- 15 oz. can of green beans and corn

**COLLECTION:** All food items are to be dropped off to the Berrien County MSU Extension Office (1737 Hillandale Road, Benton Harbor, MI 49022) no later than Friday, November 19, 2021 by Noon. 4-H clubs with more than 3 baskets of food, we encourage to please call ahead at 269-927-5674. No food items should be dropped off to the Berrien County Farm Bureau or Berrien County Youth Fair.

**ASSEMBLY:** The assembly day will be Saturday, November 20, 2021 at 10 a.m. Assembly is tentatively scheduled at the Berrien County Youth Memorial Building located at 9122 US Hwy 31, Berrien Springs, MI 49103. Distribution of baskets will be from 10:30 a.m. to Noon.

Each 4-H club will have the opportunity to select the family or families that will receive their box or boxes. There will be a maximum of 110 baskets available. \*If your club needs help in identifying a family in need, please contact your local 4-H Program Coordinator. RSVP your intent to participate to Kelly Stelter, 4-H Program Coordinator by Monday, November 1, 2021 by calling 269.927.5674 ext. 4015; email at [grandtke@msu.edu](mailto:grandtke@msu.edu) or texting 217-820-5021.

Each 4-H club that participates will be entered in a drawing to receive one of three \$100 cash prizes to be used for your club activities.



**Help Berrien County Farmers share the bounty with those in need!**

## Volunteers & Leaders—Annual National Background Check

It's that time of year for volunteers to complete their national background checks. NEW this year, background checks will be conducted through the MSU Extension Volunteer Central Dashboard. 4-H Leaders & Volunteers will need to log into their account using their temporary password and authorize the completion of their annual check. In addition this year, annual Code of Conducts will be signed through the MSU Extension Volunteer Central as well. Background checks and code of conducts must be submitted no later than November 1, 2021. If you have not done so, please contact the Berrien County MSU Extension Office ASAP. All Leaders who fail to comply will need to re-do their volunteer selection process.

## Club Coordinator—Annual Financial Summary Report Forms **PAST DUE**

This is a friendly reminder that the deadline to submit Annual Financial Report Forms were due on October 29, 2021. If your club still needs to submit these forms please do so ASAP to the Berrien County MSU Extension Office in Benton Harbor. Forms can be mailed to 1737 Hillandale Road, Benton Harbor, MI 49022, dropped off at the after hours drop mailbox out front or faxed to 269-944-4128. Forms that need to be submitted include the Annual Financial Report, Civil Rights Statement, Club Profile and Inventory Record. Forms can be found online at: [https://www.canr.msu.edu/berrien/berrien\\_county\\_4\\_h/leader-resources/](https://www.canr.msu.edu/berrien/berrien_county_4_h/leader-resources/)

## Club Coordinator—Financial Bank Statements **Due January 10**

This is a friendly reminder that the deadline to submit Club Bank Statements for December 31 statements are due on January 10th. All Clubs must submit their bank statement. Statements can be mailed to 1737 Hillandale Road, Benton Harbor, MI 49022, dropped off at the afterhours drop mailbox out front or faxed to 269-944-4128. Please note, clubs that already have their statements mailed directly to the Berrien County MSU Extension Office on monthly/bi-monthly basis may disregard.

7

### 56th Annual 4-H Leader Association

Save the date for the 56th Annual Berrien County 4-H Leaders Association, Inc. meeting!

Date:  
April 25, 2022

Time:  
7:00pm—9:00pm

Who:  
Berrien County 4-H Teen Leaders (Youth 13 years and up) and Leaders/Volunteers

Location:  
Berrien County Youth Fair - Youth Memorial Building

\*\*Each club is required to have at least one (1) representative in attendance.



*Stay tuned for  
more workshops  
and kits!*



## Upcoming Countywide Projects & Kits

Registration is now open for countywide projects and project exploration kits. Registration can be done through 4-H Online at: <https://v2.4honline.com/#/user/sign-in> and logging into your family profile. Once logged in you can find all workshops and kits in the event section of your profile!

Pre-registration is required and workshops are limited to 25 youth on a first come, first serve basis until full regardless of participation via virtually or in-person. All supplies are included unless noted during the registration process. Zoom Links for virtual projects will be sent in the email confirmation.

### 4-H Day at the SPA Workshop

Participants will learn how to make their very own sugar scrubs, lip balms, and bath fizzies.

Date: November 14, 2021  
 Time: 2:00 p.m.—3:30 p.m. EST  
 Location: Berrien County MSU Extension Office  
 Who: Open to youth ages 5—19 years as of January 1, 2021.  
 Deadline: Registration due by November 1, 2021

### 4-H Sugary Treats Adventure

Participants will learn about the various sugary treats all the while making their very own!

Date: December 12, 2021 & December 19, 2021  
 Time: 2:00 p.m.—3:30 p.m. EST  
 Location: Berrien County MSU Extension Office  
 Who: Open to youth ages 5—19 years as of January 1, 2021.  
 Deadline: Registration due by December 1, 2021

### 4-H Chocolate Workshop

Participants will learn interesting facts about chocolate from the Mayans to today.

Date: February 13, 2022  
 Time: 2:00 p.m.—3:30 p.m. EST  
 Location: Berrien County MSU Extension Office  
 Who: Open to youth ages 5—19 years as of January 1, 2021.  
 Deadline: Registration due by February 1, 2022

### 4-H Pillowcase Workshop

Participants will learn how to sew a pillowcase.

Date: March 20, 2022  
 Time: 2:00 p.m.—3:30 p.m. EST  
 Location: Berrien County MSU Extension Office  
 Who: Open to youth ages 5—19 years as of January 1, 2021.  
 Deadline: Registration due by March 1, 2022





# Tips for running a successful 4-H meeting

Adapted from an article authored by Janelle Stewart, MSU Extension. Read the complete article at [https://www.canr.msu.edu/news/tips\\_for\\_running\\_a\\_successful\\_4\\_h\\_meeting](https://www.canr.msu.edu/news/tips_for_running_a_successful_4_h_meeting).

As 4-H club meetings continue to be the foundation for many 4-H programs, conducting a meeting members want to attend is key to the success of a club. In a Michigan State University Extension article, “What happens at 4-H club meetings?” the three components of an engaging meeting – fun, business and learning – was outlined. This article will explore practical tips to managing what happens at a 4-H club meeting.

1. Start and stop on time. Starting a meeting at the designated time and finishing within a time frame of one to two hours can hold the interest, reach goals and be fun for club members. The club officers and leaders set the tone for the club.
2. Let the officers fulfill their responsibilities. The president calls the meeting to order and is in charge. Let other officers and committee chairpersons do their assigned jobs. Volunteers should help officers develop confidence in their abilities by providing guidance while remaining in the background.
3. Communicate upcoming events, dates and responsibilities. Use a variety of methods to convey the message to members and parents including phone, personal visits, social media, written notes, newsletters and phone chains. Repeat important dates and events at several meetings. Communicate with parents about club meeting locations along with beginning and ending times and stick to them.
4. Set behavior standards. Members and parents need to know what is expected of them. Club meetings are an excellent place to learn and practice good citizenship and respect for people and property.

Plan meetings with variety. Utilizing the format of 15-20 minutes of fun, 15-20 minutes of business and 45-60 minutes of learning will keep the meeting full of variety and interest of participants. Mix up meetings with lots of variety to keep interest, encourage learning and just for fun. Keep the business section effective and to the point.

1. Conclusion. Make sure each member has a chance to do and learn something at every meeting. Keep members involved and include lots of variety to help 4-Hers learn and grow through club work. Know what needs to be accomplished at each club meeting and be intentional about the learning and fun.

4-H club meetings are often the first introduction youth have to meeting settings. Making sure meetings are something youth want to attend and are meaningful and engaging will set the tone for youth’s interest and possibly future civic engagement.

To learn more about 4-H club structures and meetings, visit the 4-H Youth Development website.

## **Save the date for the 2022 State 4-H Rabbit & Cavy Show!**

The State 4-H Rabbit & Cavy Show will be held on January 29, 2022 at the MSU Pavilion in East Lansing. This one-day event is open to participants age 8 to 19. To enter, exhibitors must be Michigan 4-H members and own the rabbits or cavies they enter.

Youth may enter as many breeds as they wish. Look for registration information soon at [www.canr.msu.edu/events/state-4-h-rabbit-and-cavy-show](http://www.canr.msu.edu/events/state-4-h-rabbit-and-cavy-show).

Spectators are welcome!



### Michigan 4-H to participate in Giving Tuesday

On Nov. 30, Michigan 4-H is once again participating in the global day of giving, Giving Tuesday. The ultimate goal is to engage Michigan 4-H alumni and friends in an online effort to make real-time, fast, easy and secure gifts in support of Michigan 4-H.

From 12 a.m. to 11:59 p.m. EST, Michigan 4-H supporters are invited to participate in Giving Tuesday by giving their support financially or helping spread the word via social media channels and word of mouth. All funds raised will support county 4-H endowments. County 4-H endowments are funds created by gifts from one or more donors to the Michigan 4-H Foundation. These endowments provide a perpetual source of income for county 4-H programs, where the principal amount remains intact and the investment income supports annual needs for a county 4-H program.

During the 24-hour period, Michigan 4-H members, volunteers and supporters will have the chance to support Michigan 4-H through various challenges published on social media. Follow along using #GivingTuesday on your social media channels. Learn more about Giving Tuesday at <https://mi4hfdtn.org/giving-tuesday>.

## 4-H Events and Workshops

### November 6: A Spectacular Youth Leadership Institute

*Frankenmuth, Grand Rapids, Harrison, Jackson, Marquette and, Novi*

A statewide leadership training for youth ages 12-19. Youth will participate in face-to-face experiences at six sites across the state. The agenda includes team building, leadership training, and a panel discussion with four incredible young leaders.

<https://www.canr.msu.edu/events/yli-frankenmuth>

<https://www.canr.msu.edu/events/yli-grand-rapids>

<https://www.canr.msu.edu/events/yli-harrison>

<https://www.canr.msu.edu/events/yli-jackson>

<https://www.canr.msu.edu/events/yli-marquette>

<https://www.canr.msu.edu/events/yli-novi>

### November 6: Syrian Virtual Culture Experience

*Zoom Webinar*

This international virtual learning opportunity will showcase the Syrian culture through language, a craft, food and dance. It is an interactive, cultural experience, which is geared for everyone age 8 and above.

<https://www.canr.msu.edu/events/syrian-virtual-culture-experience>

### November 9: Banking Basics

*Zoom Webinar*

How are you keeping your money safe? It is important to research and evaluate financial institutions (banks and credit unions) and make the best choice for your financial future.

<https://www.canr.msu.edu/events/youth-money-11-9>

### November 14: Officer Roles & Parliamentary Procedure Training

*Washtenaw County MSU Extension Office, Ann Arbor*

Learn about essential officer roles: President, Vice President, Secretary, and Treasurer and the ways they support club and advisory committee work.

<https://www.canr.msu.edu/events/officer-roles-and-parliamentary-procedure-training>

### November 16: Credit Craze—Managing Credit Wisely

*Zoom Webinar*

Increase your knowledge of credit, learn how to manage it and avoid the craze of debt.

<https://www.canr.msu.edu/events/youth-money-11-16>

### November 20: 4-H In the Kitchen—Forgotten Realms Edition

*Zoom Webinar*

Come join the 4-H in the Kitchen Crew and the 4-H League of Clovers Gaming Society as we join forces to bring you a special cooking workshop to help you cook an array of dishes right out of the Forgotten Realms of Dungeons and Dragons!

<https://www.canr.msu.edu/events/4-h-in-the-kitchen-forgotten-realms-edition>

### November 23: Keep Yourself Out of Debt

*Zoom Webinar*

There are many strategies to keep yourself out of debt. Learn how to be proactive in managing your money and making a financial plan

<https://www.canr.msu.edu/events/youth-money-11-23>

For the most up-to-date events listing, go to <http://4h.msue.msu.edu/events>.



## New indoor masking guidelines for MSU Extension events

As the COVID-19 pandemic continues to shift and change, Michigan State University issued new guidance for the broader MSU community on October 13. These changes impact attendees of MSU Extension programs occurring on non-MSU property. Effective immediately, the following guidelines apply to *indoor* MSU Extension or Michigan 4-H programs or events:

- Those who participate in MSU Extension programming indoors on MSU property or any property reserved/rented for an MSU event are required to wear a face covering. This applies to anyone over the age of 2, regardless of vaccination status (unless they have a medical exemption).
- Those who participate in MSU Extension programming indoors on non-MSU property are encouraged but not required to wear masks unless required by local regulations or the venue. This may include off-site Michigan 4-H programs hosted by MSU Extension volunteer groups. MSU Extension personnel in attendance are required to wear a face covering.

For the purpose of MSU Extension events and programs, indoor events are considered those in an enclosed building with limited airflow. Barns and other outbuildings that have multiple doors that can be fully opened to maximize air flow are considered an outdoor, open air facility.

### Who must wear a mask?

The following chart may be useful to clarify masking requirements for MSU Extension professionals and program participants. For the purpose of this chart, MSU Extension volunteers and 4-H members are considered participants.

		Is the event being held on an MSU property or on a property that is being rented/reserved exclusively for an MSU activity?	
		Yes	No
Is MSU a sponsor of the event or program?	Yes	<ul style="list-style-type: none"> <li>✓ MSU Extension personnel</li> <li>✓ Participants</li> </ul>	<ul style="list-style-type: none"> <li>✓ MSU Extension personnel</li> <li>○ Participants are encouraged, but not required to wear masks unless required.</li> </ul>
	No	<ul style="list-style-type: none"> <li>✓ MSU Extension personnel</li> <li>✓ Participants</li> </ul>	<ul style="list-style-type: none"> <li>○ All MSU Extension personnel and participants are encouraged, but not required to wear masks unless required by local regulations or the venue.</li> </ul>

✓ Indicates that a mask must be worn.

Although these new guidelines provide recommendations for indoor events, MSU Extension still encourages groups to meet outdoors whenever possible. Additional information about COVID-19 best practices and mask exceptions can be found at [extension.msu.edu/approvedactivities](https://extension.msu.edu/approvedactivities). As always, this site will continue to host the most up-to-date information about in-person event requirements.

Thank you for all you do in support of Michigan's young people and for helping to protect public health while meeting face-to-face.

### Attention Club Coordinator/ Administrative Leaders:

In order to aid, clubs' should have received a COVID kit that includes signage, hand sanitizer, masks, disinfectant and attendance sheets.

If you have not picked up your kit or if you are needing your kit restocked please reach out to the Extension office.



**For Questions please contact the Berrien County MSU Extension Office at 269-927-5674.**



Berrien County MSU Extension

1737 Hillandale Road

Benton Harbor MI 49022

<p><b>Harding's Market Shoppers</b></p> <p>Support <del>Berrien County 4-H Foundation, Inc.</del></p> <p>Pick up a Harding's eScrip Community Card at Harding's Markets today!</p> <p>Harding's Markets will contribute up to 4% of your purchases to our organization every time you shop and swipe your card.</p> <p></p>	<p></p> <p>Register your card by calling 800.931.6258 or visit <a href="http://www.escrip.com/Hardings.jsp">www.escrip.com/Hardings.jsp</a>.</p>
--	---

It's Free • It's Easy • It's Powerful  
[www.escrip.com/hardings.jsp](http://www.escrip.com/hardings.jsp)